

ETSI Seminar 2023

Specialist and Testing Task Forces

Presented by: Léa Belloulou

Head of Funded Activities



20/06/2023



Introduction to STFs/TTFs

Definition

- STF= **S**pecialist **T**ask **F**orce
 - STF teams are established to accelerate the production of standards when required within the ETSI Technical Organization and Industry Specification Groups (ISGs)
- TTF= **T**esting **T**ask **F**orce
 - TTF teams support the ETSI Technical Organization and ISGs to accelerate the production of needed standards related to testing and methodology and testing and methodology of specifically needed standards.

Why?

- When the development of a standard requires specific technical competences which are not available in the Reference Bodies (Technical Committee, ETSI Project, ETSI Partnership Project, Special Committee or Industry Specification Group); and/or
- The time scale cannot be achieved with the normal voluntary contribution of the delegates.

Who can request an STF/TTF?

- An STF/TTF can be proposed by Reference Bodies.

STFs and TTFs give ETSI a **competitive advantage** by providing technical competences to rapidly develop standards needed by the market and/or to implement European Union policies

Funding Sources

STFs and TTFs are funded via:

1. The Funded Work Programme: **FWP** (i.e. funding source is the ETSI budget)
2. EC/EFTA funding
3. Voluntary contributions from ETSI Members.



How to create an STF/TTF in a Reference Body (i)

Requesting FWP funding :

- When a Reference Body identifies a need, a detailed description of the work to be done is provided by means of the **Terms of Reference** (ToR) template. It includes an accurate estimate of the maximum budget required to perform the work that has to be aligned with ETSI strategic areas
- The STF and TTF Terms of Reference Templates can be downloaded from the ETSI Portal: <https://portal.etsi.org/STF/STFs/Downloads>
- The ToR must be supported by at least **4 ETSI members** within that Reference Body and be approved by the latter.
- The ToR collected are submitted for acceptance to the OCG and the Board in September and the STFs/TTFs budget is by the Autumn General Assembly.
- The **Secretariat staff supports the** complete process

The same process applies for STFs/TTFs funded via Members' voluntary contributions



How to create an STF/TTF in a Reference Body (ii)

Requesting EC/EFTA funding:

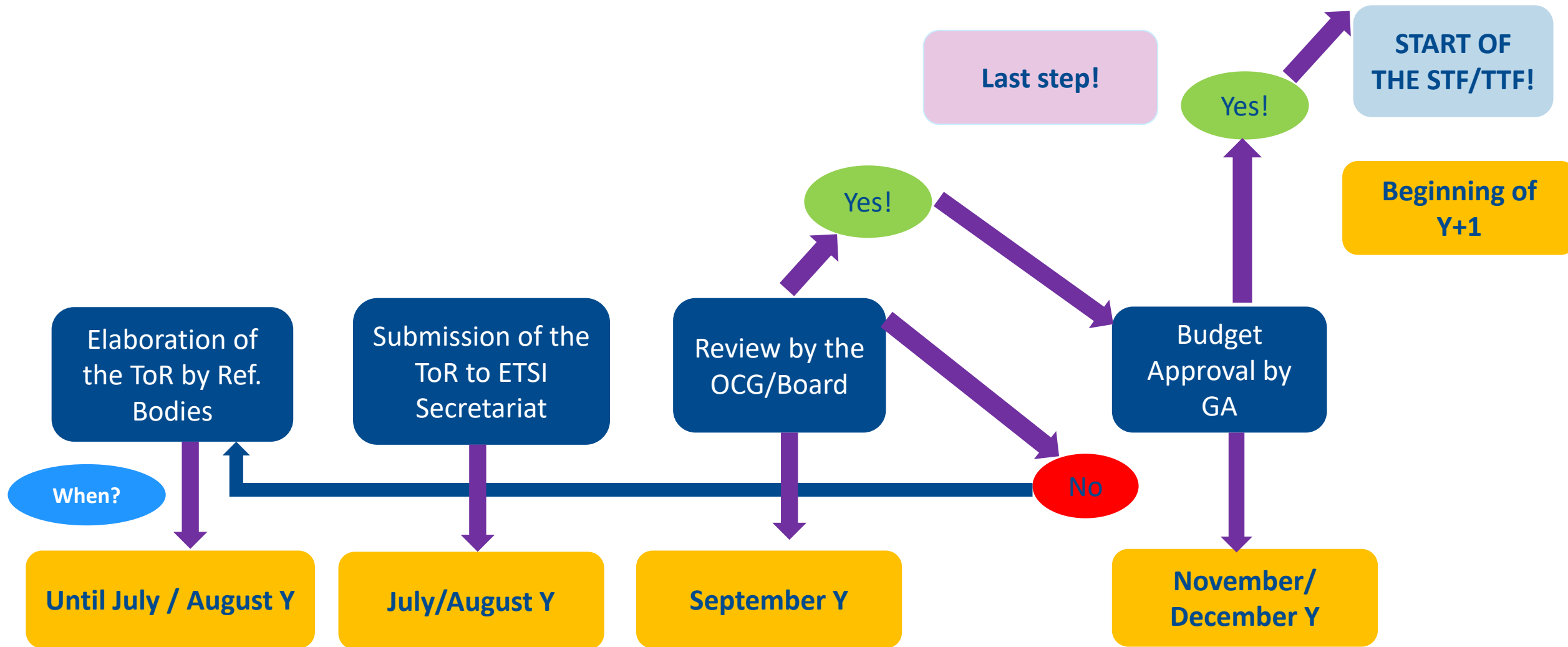
- The EC regularly opens invitations to submit Proposals to address:
 - the Annual Work Program priorities
 - the EU priorities, legislation and policies
 - the Single Market Programme (SMP) objectives.

- Interested RBs build and submit Technical Proposals to the ETSI Board acceptance before being sent to the EC approval.

- The **Secretariat staff** supports the complete process



STF/TTF FWP allocation process: Yearly Timeline

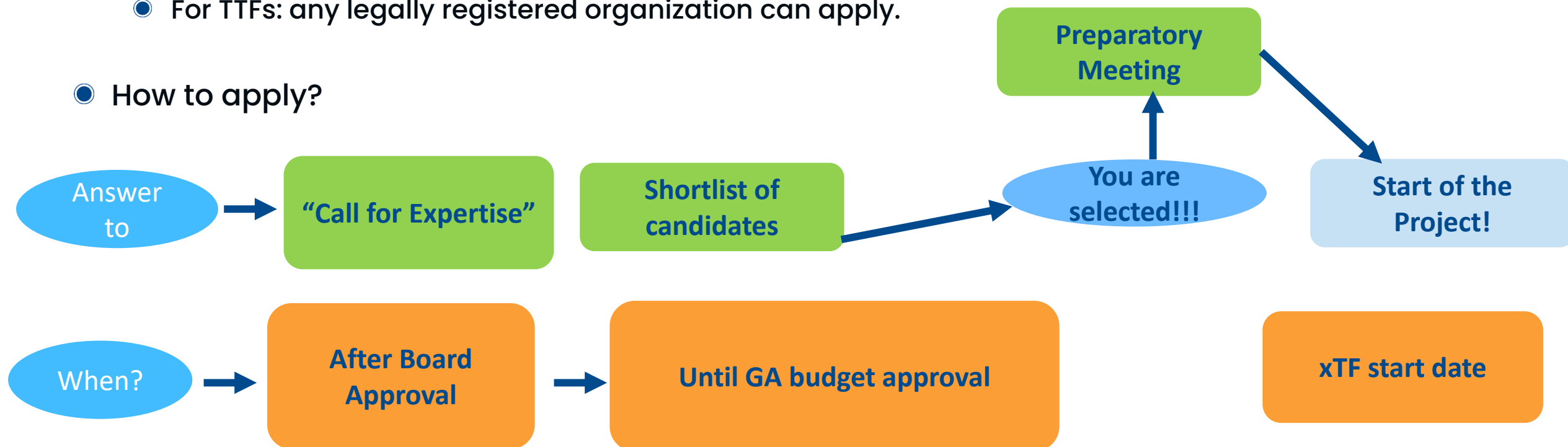


WHO- HOW and WHEN can interested parties apply for FWP STFs/TTFS ?

Who can Apply?

- For STFs: ETSI Member Organizations or non-Members with the support of an ETSI Member.
- For TTFS: any legally registered organization can apply.

How to apply?

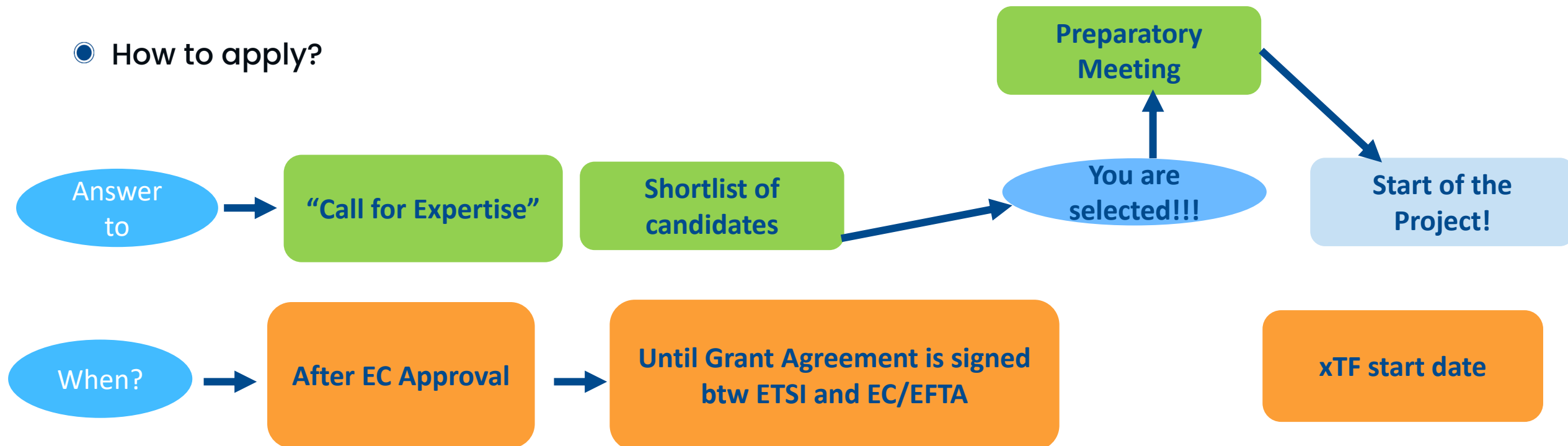


For both types of Task Force: voluntary contributions from ETSI Members may also be provided.

WHO- HOW and WHEN can interested parties apply for EU funded STF?

- Who can Apply?
 - ETSI Member Organizations or non-Members with the support of an ETSI Member.

- How to apply?



Voluntary contributions from ETSI Members may also apply.

Organisation of an STF/TTF

- **Monitoring STF/TTF progress – Project Leader role**

- The RB Chair is expected to provide technical guidance.
- The STF/TTF Leader is appointed by the ETSI Director-General in consultation with the relevant RB Chair.
- The STF/TTF Leader acts as the interface
 - with the Funded Activity Team for management of the STF/TTF,
 - with the service provider(s) for coordination of the project, and
 - with the RB Chair for technical control.

- **STF/TTF Reporting**

- The RB Chair approves the STF/TTF Progress Reports reviewed and endorsed by members of relevant RB before its approval.
- Progress Reports confirm the achievement of the intermediate milestones against which the experts' companies will be paid.

- **Closing the STF/TTF**

- Upon completion of the STF/TTF work, the RB Chair shall ensure that feedback is provided to the Director-General on the STF/TTF work.



Useful Links

WEB: <https://www.etsi.org/work-at-etsi/join-a-task-force>

ETSI Portal: <https://portal.etsi.org/STF/STFs/STF-TTF-work/STF-support-team>

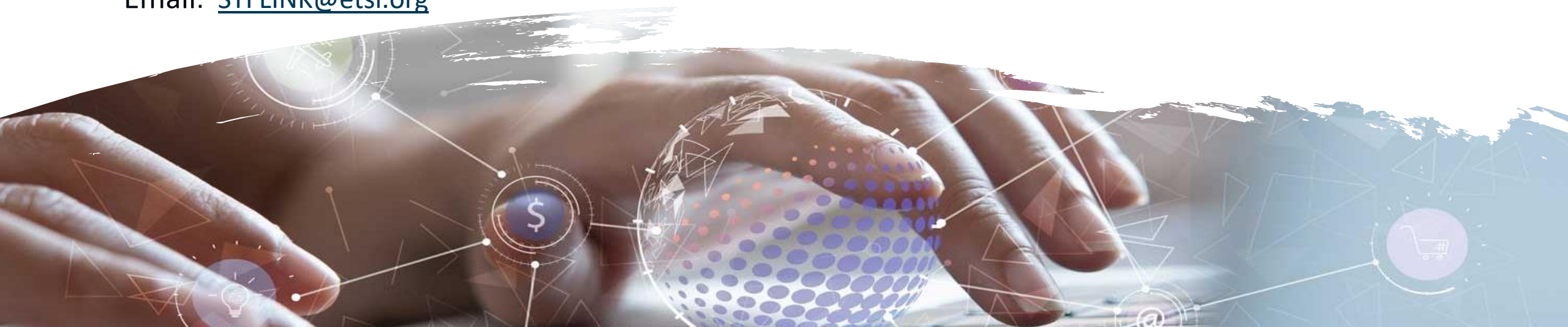
Call for Expertise: <https://portal.etsi.org/cfe/#/>

Useful documents: <https://portal.etsi.org/STF/STFs/Downloads>

ETSI Technical Working Procedures, clauses 1.10 - 1.11:

[ETSI Directives v46 - 12 December 2022](#)

Email: STFLINK@etsi.org



Any further questions?

Contact me:

Léa Belloulou

lea.belloulou@etsi.org

+33 4 92 94 42 21





Thank you for your attention

Follow us on:    